

DMA R10-22

Gravure Engraving Machine



The New Life for Engraving



◆ DMA R10-22 Series Gravure Engraving Machine

- R10-22 is used for larger size cylinder in high end market.
- R10-22A is special for full automatic engraving, auto test cut and auto dot measuring

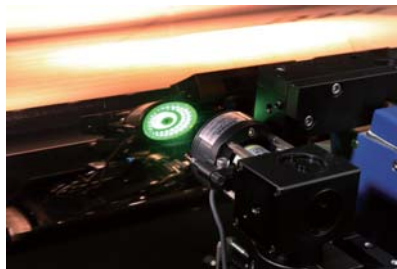
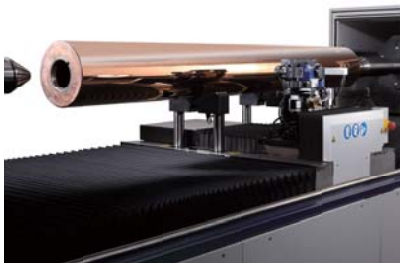
First Class Quality Engraving

- ◆ Integratable with automatic production line
- ◆ Achieving fast production
- ◆ DMA machine is compatible with existing machine
- ◆ Improving production efficiency
- ◆ High resolution, fully digital engraving head amplifier and synchronisation unit

New Features

◆ Automatic lifting system

- Automatic cylinder positioning
- Automatic loading and unloading
- Synchronous clamping

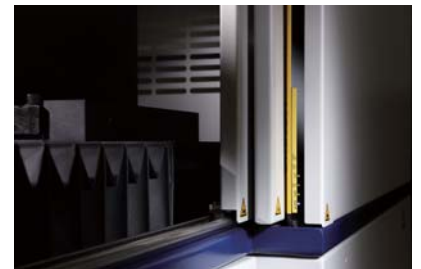


◆ Automatic camera

- Adapted on support axis, auto alignment
- Dark field illuminated vision system
- Automatic amplifier adjustment
- Full 2D distortion correction

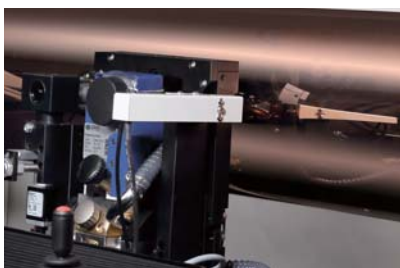
◆ Safe machine with laser fence worker protection

- Keep staff from dangerous areas



◆ Runout measurement

- Measurement with mechanical, tactile sensor
- Option: optical, contactless Laser sensor



◆ ONE PATH Technique

- DMA R10 can engrave images and very small texts with high resolution in one path at 8KHz, which improves the productivity efficiently.

◆ Inside temperature control (Optional)

- Bring constant temperature when engraving and thus provide stable engraving result.



Characteristics

Hardware

- Support driven by linear motor
- Absolut encoder with high resolution
- Automatic adjustment and measurement of cell parameters
- Synchronise clamping for the engraving cylinder
- Position controlled drum lift and door movement
- Engineered in Germany
- Robust and modern construction
- Solid iron cast base
- Better protection for key components

Software

Prior-Screening – WYSWYE

The Prior-Screening technique allows checking the real engraving-data (What You See Is What You Engrave) and retouching before engraving.

PDF-based Workflow

DMA R10 can directly accept PDF-data which is a safe, fast, compact and worldwide approved modern file format.

Multi Language Support

Machine user interface ZMI and JobCreator have language options English, German and Chinese. Languages can be easily switched on the fly.

Easy Operation

DMA R10 is operated by touch screen and keyboard on the basis of a Windows-PC with user-friendly system software.



Special Features



Complete Digital Control System / PTP (Point-To-Point)

Full digital control without analog signals. Get more ink volume. Cell engraving is precisely controlled by Point-To-Point technique (PTP) and reaches optimal edge.



Engraving Head MISSION 8

Engraving frequency at real 8KHz.



FFC (First Full Cell)

DMA R10 engraves full-size cell from the first row/cut with sharp edge results.



Sim-Laser

DMA R10 can engrave texts as small as 4pt with good result. The quality is similar to laser engraving (Sim-Laser)



Conventional Engraving

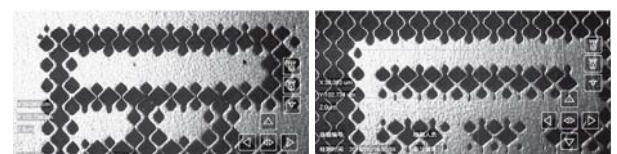
**FOR
BELOVED**

杏仁酸輕煥膚化妝水(旅行包)
用途：居家煥膚護理，軟化並重潤肌膚，保濕滋潤，使肌膚明亮光采，並有效降低果酸對肌膚的刺激和敏感。
適用對象：欲改善或預防膚色暗沉、油性肌膚、希望肌膚亮白者。

DMA Engraving

**FOR
BELOVED**

杏仁酸輕煥膚化妝水(旅行包)
用途：居家煥膚護理，軟化並重潤肌膚，保濕滋潤，使肌膚明亮光采，並有效降低果酸對肌膚的刺激和敏感。
適用對象：欲改善或預防膚色暗沉、油性肌膚、希望肌膚亮白者。



Multi-path Engraving

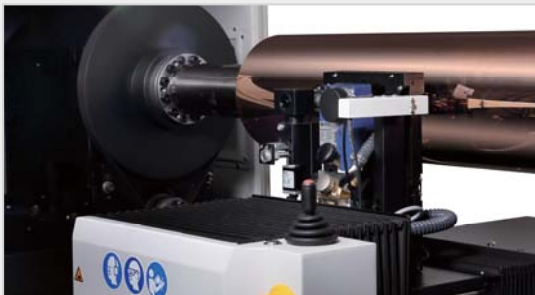
DMA R10 can produce larger/deeper cells through multi-path (2 -3 times) engraving on the same position, reaches, for example, max. depth 65µm by 60L/C angle 3.



◆ Technical Data

Model No.	DMA R10-22	DMA R10-22A (for auto. Plating line)
Dimension (LxWxH)	5260mm x 1510mm x 1610mm	5260mm x 1510mm x 1610mm
Total weight	approx. 6000kg	approx. 6000kg
Recom. space	6000mm x 3000mm x 2200 mm	6000mm x 3000mm x 2200 mm
Hollow cylinder		
Face length	500 - 2200mm	500 - 2200mm
Circumference	400 - 1400mm	400 - 1400mm
Shaft cylinder		
Face length	500 - 2200mm	500 - 2200mm
Length incl. shafts	500 - 2200mm	500 - 2200mm
Circumference	400 - 1400mm	400 - 1400mm
Cylinder weight	max. 400kg	max. 500kg
Power supply	3P/N/PE 220-230V P-N; 380-400V P-P; 16A;50Hz/60Hz	3P/N/PE 220-230V P-N; 380-400V P-P; 16A;50Hz/60Hz
Recom. temperature	20 - 25 degree	

◆ About DMA Innotec



We Make the Impossible POSSIBLE

DMA Innotec is an innovative high-tech Company Group based in Germany and Taiwan. Its core competence lies in comprehensive know-how of the latest technologies in industrial process and control systems, electronic engraving and engraving head. Our highly motivated and professional R&D-team and application experts, comprising decades of experience, are the base for the successful development of advanced products. DMA Innotec is focused on engraving technologies for gravure printing, and by applying new technologies, achieves innovation, optimization and advancement of current electromechanical engraving.

DMA Innotec is driven by the customers' demands, to enhance their productivity, production quality and thus the competitive position. Sustainable innovation, reliable service, constructive cooperation are keys to our long-term customer relationship.



[GERMANY] DMA Innotec GmbH.

Berner Str. 107, 60438 Frankfurt am Main, Germany

TEL: +49-69-348774262

[TAIWAN] DMA Innotec Int'l Co., Ltd.

Building D, No.35, Xinggong Rd., Shengang Twp.,

Changhua County 50971, Taiwan (R.O.C.)

TEL: +886-4-7977068

E-mail: info@dma-innotec.com